

# iGrafx IDEFO®

## iGrafx IDEFO is ideal for:

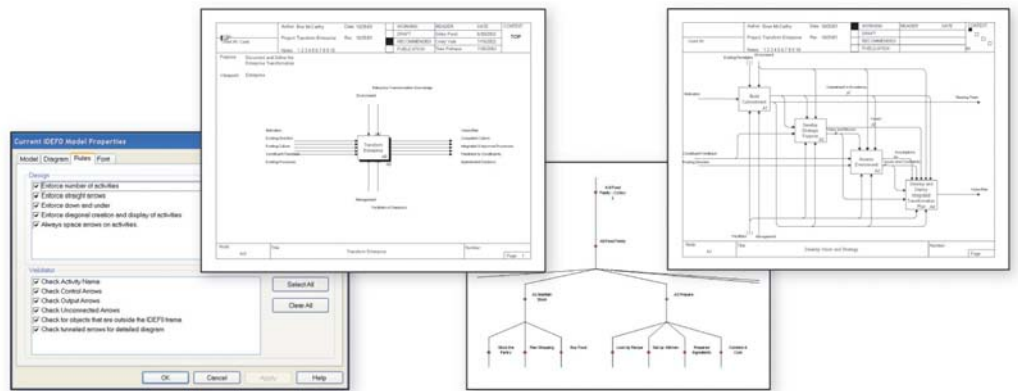
- IDEF0 Professionals
- Aerospace
- Financial Services
- Government
- ISO Registration

## Key Features:

- Model Setup Wizard
- Rules Enforcement
- Customizable Model Templates
- Glossary of Terms
- FEO, Text and Node Tree Diagrams
- Process Diagrams
- Web, PDF and Microsoft® Office® Publishing

## Leverage the Power of IDEF0

*iGrafx IDEFO® is an add-on environment for the iGrafx family of process modeling solutions that enables users to create fully compliant IDEF0 diagrams. With features such as model templates, model setup wizard and correct-by-construction rules enforcement, you can focus on capturing the details of your processes and spend less time learning a new tool.*



## IDEFO as a Foundation for Process Improvement

IDEFO (Integration Definition Language 0) is defined by the Integration Definition for Function Modeling (IDEFO) Standard published by the Federal Information Processing Standards Publication (FIPS PUBS) on December 21, 1993.

iGrafx IDEFO enables users to exploit the synergies of IDEF0 models side by side with process maps and simulations. As a component of the iGrafx family of solutions, iGrafx IDEFO diagrams can directly link to swimlane® process maps. This unique feature allows system architects and business analysts to leverage the power of two diagramming notations to facilitate communication of processes and increase the comprehension of organizational processes.

iGrafx IDEFO is a perfect choice for organizations looking for powerful, easy to use IDEF0 modeling on its own or as a tool in a broader process improvement initiative.

## A Pillar of Process Excellence

iGrafx IDEFO is uniquely designed to meet the requirements of IDEF0 modeling while integrating with other iGrafx components for a unified approach to process excellence. The iGrafx solution will help you bridge the gap between the major organization constituencies – IT, process initiatives and business analysts – to ensure a level of process consistency, management, history and control across the enterprise.

### EMEA Headquarters

Dr.-Johann-Heitzer-Str. 2  
85757 Karlsfeld n. Munich  
Germany  
Tel.: +49 8131 3175 100  
Fax: +49 8131 3175 101  
info.de@igrafx.com  
www.igrafx.de

### UK & Ireland

Units 1 & 2  
Basepoint Business Centre  
Aviation Park West  
Enterprise Close, Christchurch  
Dorset, BH23 6NW  
Tel.: +44 (0) 8707 601 354  
Fax: +44 (0) 8719 007 111  
uksales@igrafx.com  
www.igrafx.co.uk

### Representatives in:

Australia	Jordan
Austria	Korea
Benelux	Mexico
Brazil	Poland
Canada	Sweden
Denmark	Switzerland
France	Slovenia
Italy	Spain
Japan	

For contact details visit:

[www.igrafx.co.uk/contact](http://www.igrafx.co.uk/contact)